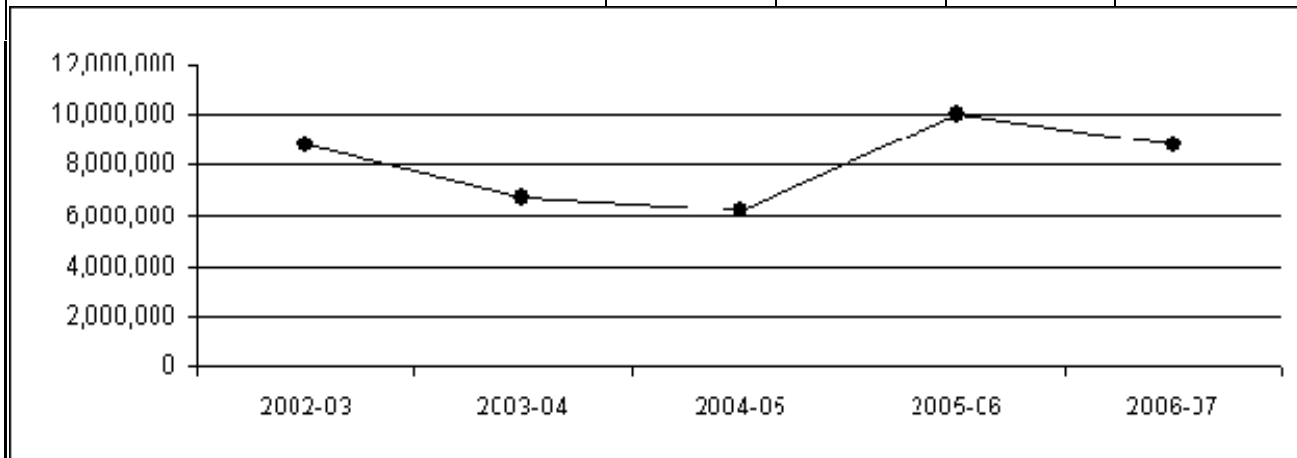


**EXPENDITURES - Externally Funded Restricted Grants / Contracts and Gifts
Fiscal Years 2003-2007**

TOTAL - Restricted Grants / Contracts and Gift Accounts*					
Category of Support	2002-03	2003-04	2004-05	2005-06	2006-07
Total - All Categories	\$21,932,958	\$20,136,505	\$20,347,182	\$24,351,116	\$24,041,438
<i>Academic Support</i>	649,860	174,005	123,564	239,235	327,139
<i>Instructional / Departmental</i>	4,992,579	3,981,635	3,246,360	5,008,386	4,364,267
<i>Institutional Support</i>	287,647	322,095	379,024	352,297	346,728
<i>Public Service</i>	1,893,288	1,255,693	753,722	1,050,043	783,303
<i>Research</i>	2,928,007	2,314,700	2,976,419	5,009,590	4,687,426
<i>Scholarships (private)</i>	1,233,509	681,509	1,143,795	1,107,975	1,236,978
<i>Scholarships (federal)</i>	9,804,648	10,651,691	10,635,936	10,892,646	11,911,325
<i>Student Services</i>	143,421	755,178	1,088,363	690,944	384,271
Subtotals by Source					
<i>Federal Government</i>	14,200,006	14,710,210	14,884,853	19,293,075	18,934,118
<i>State / Local Government</i>	1,711,889	1,138,432	773,932	964,419	1,329,315
<i>Private</i>	6,021,063	4,287,863	4,688,397	4,093,622	3,778,005

*Totals recalculated FY07 to include all scholarship, student service, administrative, and reserve accounts. Includes recovered indirect costs.

Subtotal: Restricted Grants / Contracts Only** (see next page for breakdown by college and department)					
Source	2002-03	2003-04	2004-05	2005-06	2006-07
Grant / Contract Total	\$8,803,035	\$6,722,298	\$6,191,029	\$10,055,848	\$8,846,000
<i>Federal Government</i>	4,395,357	4,058,519	4,248,918	8,400,429	7,022,793
<i>State / Local Government</i>	1,681,328	1,111,654	745,965	917,052	1,328,203
<i>Private</i>	2,726,351	1,552,125	1,196,146	738,367	495,003



**Includes recovered indirect costs and scholarships from grant awards; excludes federal scholarship programs (PELL, etc.) and reserve accounts.

Subtotal: Gift Accounts Only***					
Source - Private	2002-03	2003-04	2004-05	2005-06	2006-07
SFA Gift Total	\$3,053,358	\$2,451,507	\$3,410,611	\$3,312,492	\$3,208,708

***Includes privately funded scholarships.

**EXPENDITURES BY DEPARTMENT - Externally Funded Restricted Grants / Contracts Only
Fiscal Years 2003 - 2007**

COLLEGE / Department	2002-03	2003-04	2004-05	2005-06	2006-07
SFA TOTALS	\$8,803,035	\$6,722,298	\$6,191,029	\$10,055,848	\$8,846,000
BUSINESS	3,947	23,847	23,584	8,437	31,649
<i>Accounting</i>	0	0	0	0	0
<i>Computer Science</i>	0	0	0	0	0
<i>Economics / Finance</i>	0	15,192	16,734	8,437	3,905
<i>General Business</i>	0	0	0	0	0
<i>Manage. / Market. / Intl. Bus.</i>	0	0	0	0	27,744
<i>Dean's Office*</i>	3,947	8,655	6,850	0	0
EDUCATION	2,456,781	2,114,065	2,281,189	3,606,357	3,323,561
<i>Elementary Education</i>	20,681	27,879	22,737	366,350	436,158
<i>Charter School</i>	199,182	184,411	185,035	197,082	213,029
<i>Human Sciences</i>	18,312	20,291	7,512	4,350	3,901
<i>Human Services</i>	1,605,031	1,357,510	1,174,861	1,344,752	826,507
<i>Kinesiology / Health Science</i>	0	0	0	15,311	5,718
<i>Secondary Education</i>	474,985	420,837	586,041	1,094,187	1,177,329
<i>Dean's Office*</i>	138,591	103,137	305,003	584,325	660,920
FINE ARTS	69,995	36,073	32,624	36,275	54,630
<i>Art</i>	2,397	0	0	1,376	2,062
<i>Music</i>	10,000	0	0	0	0
<i>Theatre</i>	15,675	10,000	4,733	0	0
<i>Dean's Office*</i>	41,924	26,073	27,891	34,899	52,567
FORESTRY / AGRICULTURE	2,608,885	2,080,988	1,638,070	4,170,738	3,901,759
<i>Agriculture</i>	133,641	98,772	92,436	86,147	64,705
<i>Environmental Science</i>	35,164	0	1,940	9,634	8,896
<i>Forestry</i>	2,326,104	1,937,862	1,497,839	3,908,663	3,635,264
<i>Dean's Office*</i>	113,976	44,354	45,855	166,294	192,894
LIBERAL / APPLIED ARTS	853,861	715,482	542,423	429,141	315,733
<i>English & Philosophy</i>	0	0	0	0	0
<i>History</i>	0	505	3,798	510	(28)
<i>Modern Languages</i>	0	0	0	0	0
<i>Pol. Sci. / Geog. / Public Adm.</i>	0	0	0	0	6,459
<i>Psychology</i>	0	0	4,980	0	4,455
<i>Sociology</i>	0	0	0	0	7,467
<i>Communication</i>	0	0	167	24,991	0
<i>Criminal Justice</i>	0	0	0	0	0
<i>Military Science</i>	98,857	91,523	66,758	71,010	106,307
<i>Social Work</i>	693,782	571,215	278,039	197,439	130,556
<i>Dean's Office*</i>	61,222	52,239	188,682	135,191	60,518
SCIENCES / MATHEMATICS	1,602,896	1,699,354	1,621,062	1,266,224	942,088
<i>Biology</i>	143,609	141,974	223,577	214,521	220,551
<i>Biotechnology</i>	82,455	111,117	109,229	178,249	5,555
<i>Chemistry</i>	65,357	40,000	57,544	37,855	48,343
<i>Geology</i>	0	0	0	0	0
<i>Mathematics / Statistics</i>	606,030	749,018	667,384	379,393	263,594
<i>Nursing</i>	169,451	154,280	118,765	63,331	78,970
<i>Physics / Astronomy</i>	(499)	0	5,494	0	0
<i>Dean's Office*</i>	536,493	502,963	439,070	392,876	325,074
LIBRARY*	242,731	7,620	2,843	109,402	198,639
OTHER*	963,938	44,868	49,233	429,274	77,940

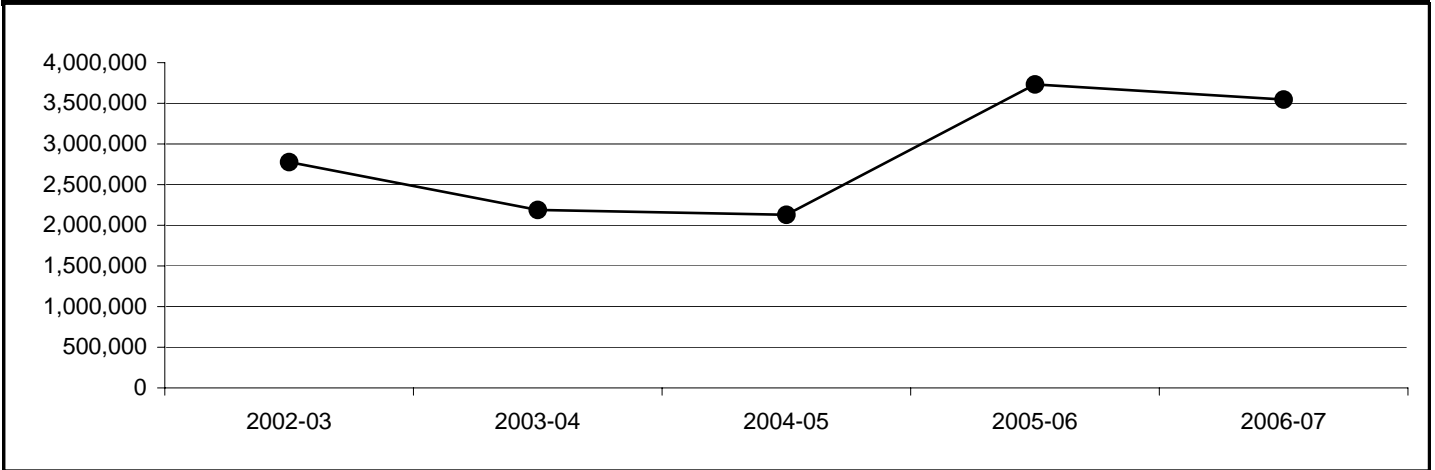
*Includes grant / contract expenditures by the dean's office or other unit, as well as indirect costs recovered during the fiscal year for the entire college or unit.

EXPENDITURES - Research and Development
Fiscal Years 2003-2007

Annual Report of Research and Development Expenditures*					
<i>Internal and External Sources</i>					
	2002-03	2003-04	2004-05	2005-06	2006-07
Research / Development Total	\$5,491,566	\$3,743,887	\$4,328,157	\$6,855,542	\$6,717,380

* As reported to the Texas Higher Education Coordinating Board. Includes expenditures of subawardees and recovered indirect costs. Includes designated funds, state appropriated funds (Texas Excellence and Research Development), and other internally controlled research funds (Research Enhancement faculty research grants and minigrants).

Annual Report of Restricted Research Expenditures**					
<i>External Sources Only</i>					
	2002-03	2003-04	2004-05	2005-06	2006-07
Restricted Research Total	\$2,777,306	\$2,188,866	\$2,129,495	\$3,732,371	\$3,546,500
<i>Federal Government</i>	1,200,537	991,542	988,188	2,790,444	2,431,424
<i>State / Local Government</i>	72,047	207,861	476,040	355,280	590,320
<i>Private</i>	1,504,722	989,463	665,267	586,648	524,756

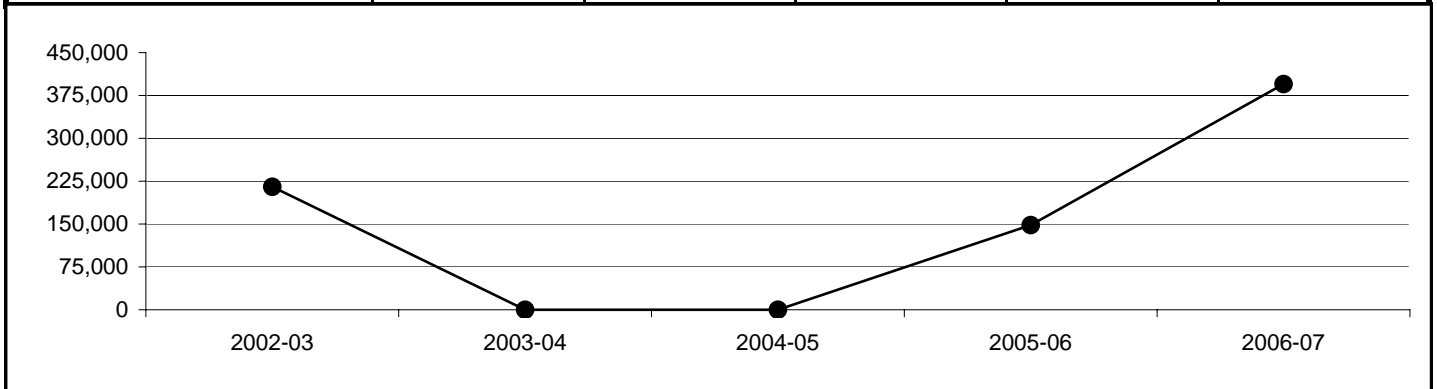


** As reported to the Texas Higher Education Coordinating Board. Excludes expenditures of subawardees and recovered indirect costs. Effective FY06, serves as the basis of Research Development Fund allocations. Excludes state-appropriated research funds.

**EXPENDITURES - Internally Controlled Research Funds
Fiscal Years 2003-2007**

SFA Research Enhancement Program					
Faculty Research Grants and Minigrants					
College / Other	2002-03	2003-04	2004-05	2005-06	2006-07
Total Expended	\$188,670	\$223,295	\$199,674	\$227,894	\$222,019
<i>Business</i>	24,877	16,380	14,149	17,726	4,695
<i>Education</i>	4,254	32,299	9,923	53,494	10,568
<i>Fine Arts</i>	16,125	1,500	650	0	21,565
<i>Forestry / Agriculture</i>	458	40,480	12,489	19,888	15,312
<i>Liberal / Applied Arts</i>	15,510	30,103	32,261	42,331	35,631
<i>Sciences / Mathematics</i>	122,274	95,451	130,202	94,105	131,373
<i>Library</i>	0	0	0	0	0
<i>Other</i>	5,173	7,081	0	350	2,876

Texas Excellence* and Research Development** Funds					
State Appropriated Funds					
College / Other	2002-03	2003-04	2004-05	2005-06	2006-07
Total Expended	\$215,216	\$0	\$0	\$148,200	\$394,982
<i>Business</i>	30,476	0	0	0	0
<i>Education</i>	22,646	0	0	0	28,857
<i>Fine Arts</i>	19,300	0	0	0	0
<i>Forestry / Agriculture</i>	57,235	0	0	18,433	141,844
<i>Liberal / Applied Arts</i>	0	0	0	0	15,489
<i>Sciences / Mathematics</i>	85,047	0	0	129,767	208,792
<i>Library</i>	0	0	0	0	0
<i>Other</i>	512	0	0	0	0



*Texas Excellence Funds appropriated for the FY 02-03 biennium; no funds were appropriated beginning with the FY 04-05 biennium.

**Research Development Funds appropriated beginning with the FY 06-07 biennium. As reported to the Texas Higher Education Coordinating Board.